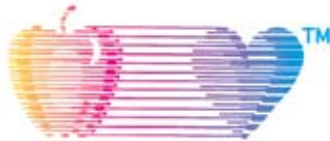


BULLETIN BOARD

ALL KIDS ALL SCHOOLS



This Issue:

Main Event	1
Main Event Auctions	3
PVPUSD Budget Update	4
Matching Gift Companies	4
Win a Toyota Highlander	5
Grandparents Club	6
Honor Roll	6
Summer Break	8

Main Event XXVII. Don't Miss It!

The MAIN EVENT is the largest, most successful, single event fundraiser for the Palos Verdes Peninsula public schools. This annual benefit, attended by over 600 guests, will be celebrating its 27th year on May 2, 2009.

The evening will feature dancing to the music of the Decades Band, a local band with upbeat, live music from the '60s to now. Also returning by popular demand is live auctioneer Dennis Rizza, a perennial favorite among the Main Event crowd. An opportunity drawing will take place at this year's Main Event for a 2009 Toyota Highlander Hybrid Limited. Tickets for the Highlander are \$50 each or 3/\$125.

Once again this year, the Main Event will take place under the big tent at American Honda Motors co., Inc. in Torrance. As is traditional, the event will have on-line, silent, wine and live auctions with over 350

continued next page...

MAIN EVENT XXVII



Saturday, May 2, 2009

5:00 Major Donor Reception
6:00 Main Event begins

Location:
 American Honda Motors Co. Inc., Torrance

Band:
 Decades

Food:
 The Depot/Chef Michael Shafer

Bar:
 Hennessey's, Inc.

Attire:
 Mod Cocktail Attire, Tie Dye Optional
 Leave your tux at home!

Tickets:
 \$175 per person

continued from pg. 1:

Main Event XXVII / Facts & Information

packages including sports tickets and memorabilia, dining, airplane rides, trips, entertainment, jewelry, wines and more. The live auction will feature a membership to the Portuguese Bend Beach Club (at least a ten year waiting list), as well as trips, jewelry, dining opportunities, and other one of a kind items.

The MAIN EVENT is an annual fundraising dinner, dance and auction sponsored by the Palos Verdes Peninsula Education Foundation, a 501(c)(3) non-profit organization (ID #95-3498211). Founded in 1980, the Foundation has raised over \$17 million in community contributions to maintain and improve educational resources, programs and technology in the Palos Verdes Peninsula Unified School District. PEF has pledged \$1.5 million to the District for the 2008-2009 school year. In addition, this year PEF will donate funds to elementary World Language programs as well as PVIT and SMERT, the high school robotics, technology and engineering programs.

For tickets or more information contact 310.378.2278, email help@pvpef.org or visit www.pvpef.org.

Save the Date!



Friday, August 21, 2009

22nd Annual South Bay Classic Golf Tournament

Proceeds help fund local school and youth drug-prevention and education programs in the South Bay.

Funds from this tournament distributed to PEF will help fund Safe School programs at the Intermediate schools.

Presented by:

American Honda Motor Co., Inc.

South Bay Sunrise Rotary Club

Japan Business Association

South Bay Regional Committee

Smarter Giving For Everyone



Edward Long
Elder Law Attorney

Smarter Giving for Everyone is a free informational program provided by PEF in collaboration with other Peninsula non-profit organizations.

Edward Long, a nationally recognized elder law attorney and co-founder of H.E.L.P. (Healthcare and Elder Law Programs), will speak about smarter giving strategies including:

- Avoiding estate taxes and capital gains taxes
- Tax-smart giving options using IRAs and other retirement plans
- Estate gifts: easy ways to leave a legacy for every financial situation
- Charitable scams, and how to find out if you are dealing with a legitimate charity

35 lucky attendees will receive free copies of the book Inspired Philanthropy.

**Wednesday, May 6, at 4 pm
Ridgecrest Intermediate School**

Refreshments will be served.
RSVP to rsvp@pvpef.org or (310) 378-2278.

**Thank you Sponsors!
Main Event 2009.**

HONDA

The Power of Dreams



TOYOTA

Making a Difference



EXCELLENCE
IN MOTIVATION
performance cultures @ work

ALL ACCESS
STAGING PRODUCTIONS



ON LINE AUCTION

Visit our Main Event On Line Auction

April 17 - 27

www.maineventauction.com

Main Event 2009

AUCTIONS

SILENT AUCTION

Some of the great auction items this year will include:

Lakers Tickets

Dodgers Tickets

Angels Tickets

Mammoth Condo

Los Cabos Condo

Restaurant Gift Certificates

Family Portraits

Principal for the Day

Parking Space at PVHS

Parking Space at Pen High

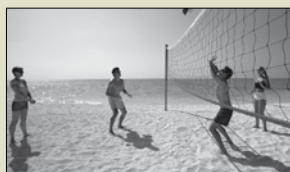
Graduation Tickets

Sports Camps

Jewelry



LIVE AUCTION (Other items may include trips, additional dinners around town, and more!)



Portuguese Bend Beach Club

The waiting list for membership to the private and exclusive Portuguese Bend Beach Club is now way over ten years! That is why you won't want to pass up this priceless opportunity to purchase a one year membership. Plus you'll have the right to renew yearly at the ongoing regular membership rate.



Dinner at BFDs (Buffalo Fire Department) with Chef Shafer

Twenty people will dine at Chef Shafer's new restaurant, Buffalo Fire Department, located right across from The Depot. Chef Shafer has many surprises in store for you! A night to remember!



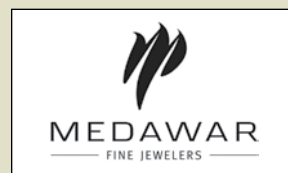
U.S. Open Golf Tournament/ June 18 - 21, 2009

Two tickets and four nights at the U.S. Open Golf Tournament at Bethpage State Park Black Course in Farmingdale, NY. See the greatest names in golf, including defending champion Tiger Woods. A chance of a lifetime!



Laker Playoff Tickets

Here's your chance to sit close enough to see Kobe sweat! See the Lakers in the playoffs! Two tickets in Row 2 right at the free-throw line! It doesn't get any better than this!



Jewels from Medawar

A spectacular pair of pave diamond hoop earrings, 2 carat total weight, from our friends at Medawar Jewelers.



Trustee Wine Cellar

The PEF Trustees will put together a great start to your own wine cellar or add to your existing collection. A surprise variety of wines to delight your palette!



Honda AquaTrax F-15

The 2009 Honda F-15 Personal Water Craft (PWC) is made for three passengers for three times the fun!

PVPUSD Budget Update

The recently adopted State budget plan includes deep cuts to the public school system. All school districts are implementing plans to address the negative impact on local educational programs. We continue to estimate a loss to the District of \$6 million dollars over the next 16 months. Federal aid, if any trickles to our district, will be limited.

Based on this estimate, the Board of Education has approved resolutions for layoff notices to over 100 teachers as well as support staff. Sadly, if all of these cuts prove to be necessary, they will impact class sizes, district & site administrators, music, health, counseling, student activities and athletics, nursing/health services, psychologists, libraries, PE & technology aides, custodians, clerical staff and more. The layoff notices are precautionary in nature and some of them could be rescinded if the budget situation improves.

The District is working with principals, employee organizations, PTAs, Peninsula Education Foundation and Booster Clubs to determine priorities and we are all considering revenue opportunities as well. This is a different situation than when the Save Our Teachers Now campaign saved all the teaching jobs that had to be cut this time last year. This year, the budget cuts we face are at least twice as large, we don't have the same opportunity for early retirement offers, fundraising in the current economy is more difficult, and creative cost cutting alone will not solve the problem.

Thankfully, many people have asked what they can do to help. First, **make sure you've contributed to the Peninsula Education Foundation** (www.pvpef.org/donate.html) since it's still the best place to direct your financial support. Also, attend your PTA meetings, read your newsletters and the variety of communication from your school's PTA.

We must be fiscally conservative and continue to develop multi-year budget plans around the worst case scenario. In the spirit of sharing the pain, everything will be discussed and evaluated as possible solutions. The District had to comply with the statutory timeline (March 15th) for notifying teachers and other certificated employees, including administrators, that they may not have a job next year.

The initial list of solutions can change if alternative plans are identified and implemented. At press time, we anticipate that by March 23rd the school board will have voted on a proposed \$165 tax per parcel (for 4 years) that would raise a little over \$3 million a year, meaning that it would not solve the entire budget problem, but would lessen the impact. Fundraising and cost cutting will still take place. If the parcel tax is approved, seniors (age 65 or over) would be eligible for an exemption.

All groups are encouraged to share any proposed solutions for reducing expenditures. This is a very difficult and challenging time and it will take all of us to develop the solutions necessary to survive this economic downturn. Please communicate with us via help@pvpef.org because we are interested in your ideas and concerns.

Matching Gift Companies

Abbott
AES Redondo Beach, LLC
Alaska Airlines
Allianz Global Risks-US
Altria
American Express
American Honda Motor Co., Inc.
American International Group, Inc.
Ameriprise Financial
Amgen
Bank of America
BAX GLOBAL
BD Giving Station
Bel Air Investment Advisors LLC
Blue Shield CARES
Boeing Company
BP Amoco
BP Foundation
Cadence Design Systems, Inc.
The Candle Foundation
The Capital Group Companies
Chevron/Texaco
Cisco Foundation
Citigroup Foundation
Copley Newspapers
Crail-Johnson Foundation
The Daily Breeze
Dell Direct Giving
DirectTV
Duke Energy
Edison International
Eli Lilly and Company
Far West Construction, Inc.
Fidelity Foundation
GE Foundation
Global Impact
Goldman, Sachs & Co.
Guidant
H. J. Heinz Co.
Hewlett Packard
The Home Depot
Honeywell
Innosoft International, Inc.
ITG Inc.
JP Morgan Chase
Kaplan, Inc.
Kirkland & Ellis
Los Angeles Times
Macy's Inc.
Madison Tyler Holdings, LLC
Mattel
McKesson Foundation
Medtronic Foundation
Merrill Lynch & Co.
Morgan Stanley
Nissan
Northrop Grumman
Northwestern Mutual
Occidental Petroleum
Office Depot Inc.
ORACLE
Pfizer
Philip Morris
Pimco Foundation
Prudential
Quellos Group, LLC
R.R. Donnelley
Raytheon Company
Rockwell Collins
Scitor Corporation
Sempra Energy
Sony Corporation of America
Sony Pictures Entertainment
Sun Microsystems Foundation
Symantec
Teledyne Technologies, Inc.
Tenet Healthcare
Thomson West
Time Warner
Toyota
UBS Foundation - USA
Union Bank of California
Wachovia
Washington Mutual
Wells Fargo
Weyerhaeuser Company
World Reach, Inc.
Yahoo!

Win!



Purchase a raffle opportunity ticket for a 2009 Toyota Highlander Hybrid Limited

Tickets are 1/\$50 or 3/\$125. Car value is \$40,000. Raffle drawn at the Main Event. Winner need not be present to win. Thank you to Toyota Motor Sales, U.S.A. for this generous donation!

Features include:

Rear Seat Entertainment System, Touch Screen Navigation System w/ Voice-Activation

JBL AM/FM 4-Disc In Dash CD Changer with Hands-Free Phone Capability via Bluetooth Wireless Technology

XM Satellite Ready Capability (Requires a XM receiver), MP3/WMA Playback Capability and 9 Speakers in 7 locations

Front Auto Dual Zone Climate Control System (Includes Steering Wheel AC Controls)

Auto Rear Air Conditioning System w/ Rear Vents for 2nd & 3rd Row

Power Tilt/Slide Moonroof

TOYOTA

Making a Difference

MAINE EVENT

Grandparents Club



Cicoria Family



Erickson Family

Calling All Grandparents!

The PEF Grandparents Club is encouraging membership from grandparents of all Palos Verdes public school students! What better way to support grandchildren than to help their schools maintain important educational programs?

Membership starts at \$100, but great “bragging” opportunities are included at the following levels:

\$365 Level – Dollar A Day

Includes the quarterly “Bulletin Board” newsletter, listing on the Grandparents Club page of our website – you can even include a photo. Plus, a “PEF Proud Supporter” license plate frame.

\$1,000 Level – Major Donor Friend

Includes the above, plus a half-page ad in the Main Event catalog (you can include a photo of grandkids and “brag”), an upgraded license plate frame, and invitations to Major Donor events.

\$2,000+ Level – Major Donor “Bronze”

Includes the above, plus your family name on our Donor Recognition Wall. Above all, grandparents will have the satisfaction of knowing they are helping maintain programs and staff that impact their grandchild’s education. Grandparents from all over the country (and even overseas) are joining!

Grandparents Club questions?
Contact Cheryl Ward at (310) 378-2278 or cheryl@pvpef.org.

Join Now! Here’s How:

Go to:
pvpef.org/donate.html
and click on “Grandparents Club”
or
Call (310) 378-2278

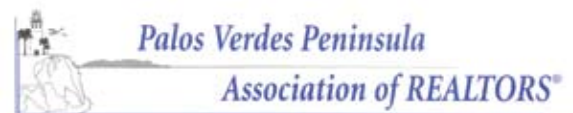
Real Estate Honor Roll

2009

Thank You Real Estate Professionals for Your Leadership in Supporting PV Public Schools

The Peninsula Education Foundation has pledged \$1.5 million to benefit PV public school children. We greatly appreciate the generous support of real estate professionals, especially at a time when the State is drastically cutting public school funding.

Corporate Sponsors



Deans List – \$1000 Donors



Violette Beshay
RE/MAX
Palos Verdes
(310) 514-1364



Bob Healey
CB Richard Ellis
(310) 880-8171



Dennis Shaffer
California Funding
Group
(310) 678-0075



Al Scafati
Coldwell Banker
(310) 544-8403



Tricia Rapaport
RE/MAX
Palos Verdes
(310) 378-1163



Liz Cotton
RE/MAX
Palos Verdes
(310) 344-0261



Philo & Raju Chhabria
Shorewood
(310) 698-4545



Allen Bond
Countrywide Bank
(310) 791-5757



Maureen Megowan
RE/MAX
Palos Verdes
(310) 541-6416



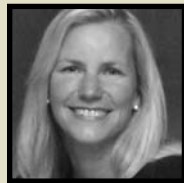
Cheryl Rau
RE/MAX
Palos Verdes
(310) 872-9098



Peggi Collins
Law Offices of
Peggi Collins
(310) 328-4300



Bill Ruth
Keller Williams
(310) 544-7514



Pam Barclay
Coldwell Banker
(310) 544-8404



**Carolyn Lizdenis &
Soraya Greenway**
Shorewood
(310) 308-9299



Suzanne Dyer
Prudential
(310) 265-2112



Charlie Raine
RE/MAX
Palos Verdes
(310) 544-9999



Kurt Hoyt
Keller Williams
(310) 704-7471



Debbie Allen
RE/MAX
Palos Verdes
(310) 872-4164



**Debbie Tretheway
Michelle Alessi**
American Capital Corp.
(310) 373-4586



Alexa Hoyt
Keller Williams
(310) 704-7497



**Virginia Butler
Les Fishman**
Coldwell Banker
(310) 791-6029



Jane Angel
Coldwell Banker
(310) 791-6022



Chris Adlam
RE/MAX
Palos Verdes
(310) 356-4433



Georgiana Rosenkranz
South Bay Brokers
(310) 514-1364



Heidi Agid-Mackebach
RE/MAX
Palos Verdes
(310) 703-1966

Honor Roll – \$500 Donors



Janice Driscoll
Keller Williams
(310) 544-7554



Jackie Wang-Dojiri
RE/MAX
Palos Verdes
(310) 377-12888



Steve Smith
RE/MAX
Palos Verdes
(310) 418-1741



Patty Sullivan
Coldwell Banker
(310) 418-7906



Leslie Stetson
Prudential
(310) 936-1283



Stephen Haw
RE/MAX
Palos Verdes
(310) 377-7539



Helen Banos
Coldwell Banker
(310) 544-8416



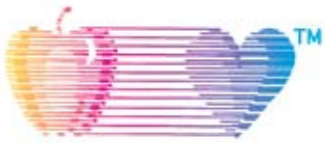
Jackie Toubes
Keller Williams
(310) 544-7552



Maxim Ofina
RE/MAX
Palos Verdes
(310) 971-7309



Jackie Crowley
RE/MAX
Palos Verdes
(310) 541-2474



Peninsula Education Foundation

P.O. Box 2632
Palos Verdes Peninsula
California, 90274

Non-Profit Org.
U.S. Postage
PAID
Palos Verdes Pen.
CA 90274
Permit No. 126



Board of Trustees

David Wagman, President
Kate Cocke, Executive Vice President
Lena Miller-Horii, VP Annual Fundraising
Janice Tecimer, VP Strategic Planning
Deidre Manns, VP Major Donors
Steve Lopes, VP Endowment
Caroline Leach, VP Community Relations
Krishna Kumar, Treasurer
Regina Finnegan, Secretary

David Bartholomew
Tracy Bracken
Kathy Cua
Tony Cunha
Kristin Curren
Phil Daigneault
Emiley Daly
Kathy Erickson
Noelle Giuliano
Susan Hay
Julie Hezlep
Jennifer King
Dave Klein
Allison Mayer
Marta Merola
Gina Padilla-Herron
Jack Pharris
Rick Phillips
Charlie Raine
Matthew Rener
Bill Ruth
Donna Coogan-Segal
Derek Smith
Cathy Vilichich

Andrea Sala, Executive Director
Diana Morgan, Staff Accountant
Cheryl Ward, Development Director
Carolyn Niman, Administration

PEF Office

300A Paseo del Mar, Palos Verdes Estates, CA 90274
310.378.2278 voice • 310.378.2078 fax
www.pvpef.org • help@pvpef.org



Sponsored by the Peninsula Education Foundation

5th Annual Summer Break



- Fee-based summer school for grades K-5.
- Located at Silver Spur Elementary School.
- Readiness and Enrichment Classes.
- Small Class Sizes.

THREE two week sessions!

Join us for one, two or three!

June 22 – July 2

July 6 – July 17

July 20 – July 31

8:45 a.m. – 11:55 a.m.

www.pvpef.org for more information

NEW THIS YEAR!

Summer Break Institutes at Dapplegray
for grades 3-4-5.

Palos Verdes Peninsula Summer Schools presents

High School Summer School at Peninsula High

For more information: www.pvpps.com

Sponsored by: Peninsula Education Foundation